
Fulton County Schools

Personalized Learning

Instructional Model: Barnwell

Elementary

May 2016

Barnwell Elementary

All students are proficient communicators, critical thinkers, and problem solvers - tomorrow's global leaders.

Students must become self directed, 21st century learners who take ownership and interest in their learning.

Varied Strategies

Choice and Voice Integrated

- **Workshop model** will be used to establish an environment that provides independent, teacher-led and collaborative learning opportunities.
- Different strategies will be used to create **purposeful** opportunities for students to use problem solving and critical thinking skills. All activities chosen based on a variety of different quantitative and qualitative data sources.

Co-planning Learning

Choice and Voice Integrated

- One-on-one and small group **student conferencing** will be held to set, measure, and reflect on student goals.
- This process will create accountability for students and teachers throughout the learning process

Just-in-Time Direct Instruction

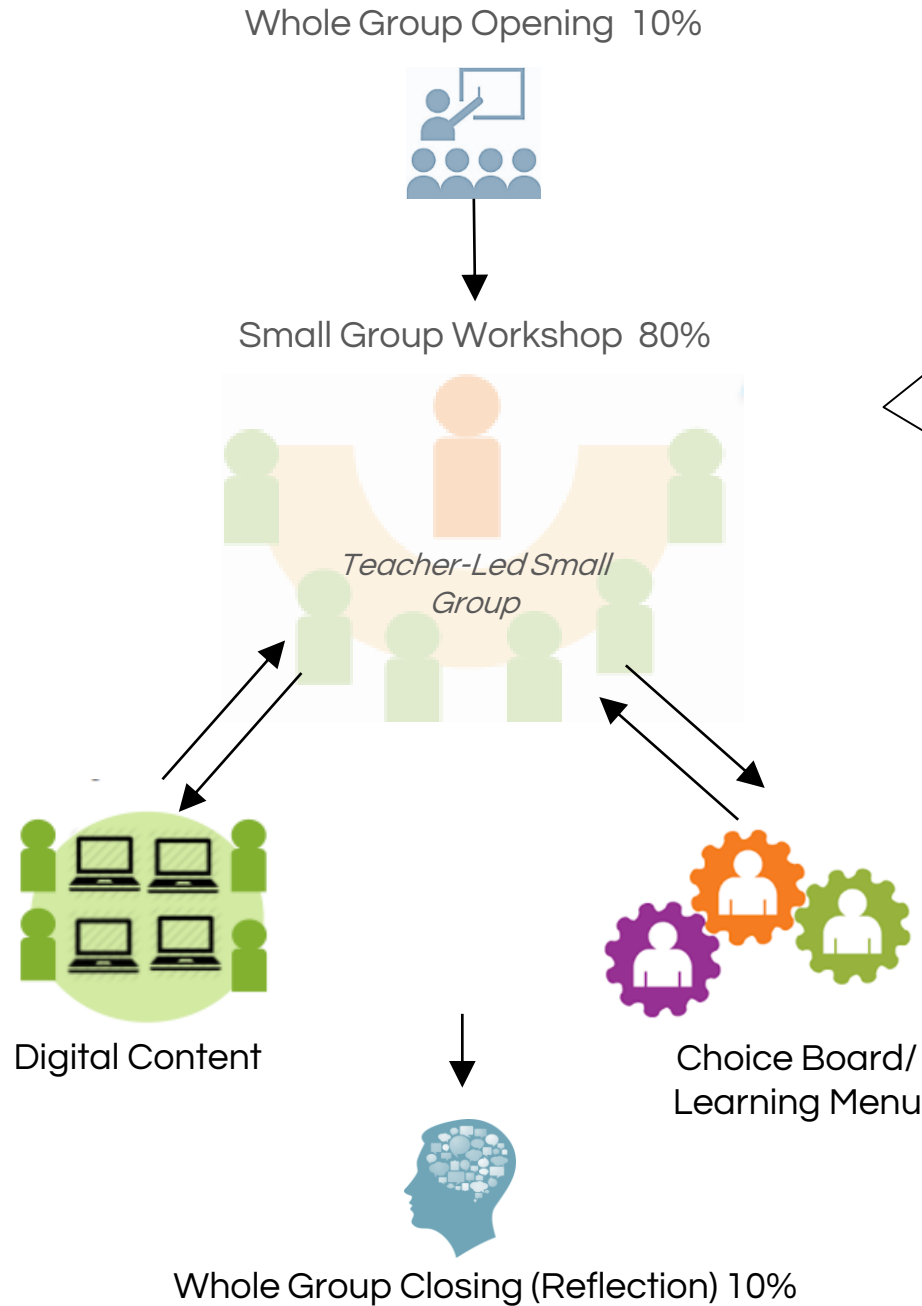
Choice and Voice Integrated

- Teachers will use meaningful **formative assessment** data to inform:
 - instructional decisions (mini-lessons)
 - flexible grouping decisions
- **Formative Assessment** will be *efficiently* collected in order to provide immediate feedback on *both* process and product

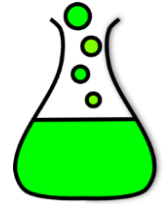
Our Scope & Models

Grade	Subjects (and Teachers if applicable)	Instructional Model
K-2	<i>STEM/Humanities</i>	Option #1
3-5	<i>STEM/Humanities</i>	Option #2

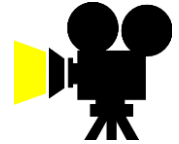
Option 1: K-2 STEM/ Humanities



Integration Possibilities:



Experiments



Demonstrations



Projects



Project-Based
Learning

Option 2: 3-5 STEM/Humanities

Whole Group Opening (10%)

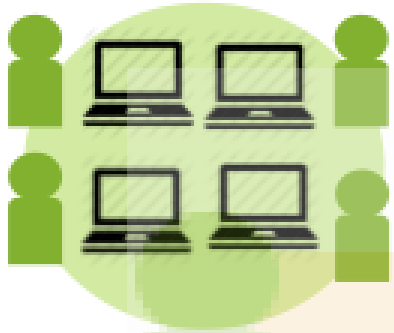


Experiments

PBL

Projects

Demonstrations



Digital Content

Teacher-led
Flexible
Small
Groups



Choice Boards &
Learning Menus



Integrated
Reflection

How Our Models Think about School Structures Differently

 <p>Facilities</p>	<ul style="list-style-type: none"> • Our model focuses on providing classrooms with flexibility to create personalized learning spaces • We will use our media center as a student-centered hub of learning. • We will examine our use of computer labs and expand our use of “in classroom” technology. We may close down some of our labs and create other types of learning labs/space.
 <p>Offline/Online Content</p>	<p>OFFLINE</p> <p>K-5 - RELA - Leveled Library, classroom library, math resource room, guided reading workshop. K-5 Math - My Math McGraw Hill resources, County assessments, math manipulatives, workshop stations in classroom, math readers in leveled library, DOE frameworks K-5 SS/Science - AIMS books, district textbooks/workbooks, teacher made lesson plans..</p> <p>ONLINE</p> <p>K-5 RELA - Study Island, Education City, Reading Eggs, STAR, Moby Max, Front Row, Mackinvia, Safari Montage, ReadWorks, Hybridge K-5 Math - Redbird, Education City, Front Row, Moby Max, LearnZillion, My Math digital content K-5 SS/SCI - Mackinvia, Safari Montage, Study Island, Brain Pop, Study Jams</p> <p>Team will work together to decide best strategies for choosing digital content requirements.</p>
 <p>Schedule</p>	<ul style="list-style-type: none"> • Schedule will include more opportunities for cross curricular instruction (Science embedded in Math block and SS embedded in RELA block). • Teachers will have collaborative planning 5 days per week. • STEM lab will be a weekly special integrated with each grade level’s curriculum. • Media center and computer labs schedules will be examined for more efficient use.